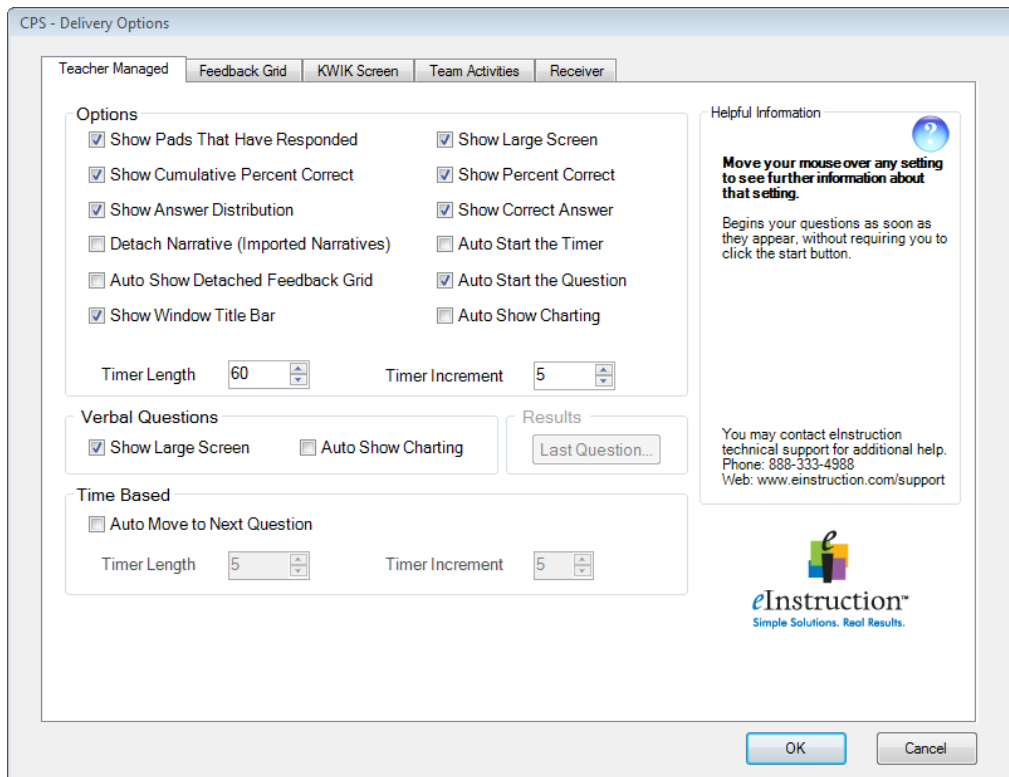


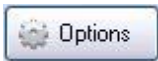


Create a CPS™ Database

Accessing Delivery Options

1. Open the CPS Software, and choose **Settings→Delivery Options** menu, select Delivery Options.



Note: You can also access the delivery options in the following ways:

- From the engage toolbar  during an active CPS Session.
- In the Standard mode engage window click the **Options** button . 
- In the Teacher Led engage window click **Options** . 
- In the Challenge Board engage window click the **Options** menu.

Options

- **Show Pads That Have Responded:** Alters the on-screen appearance of the response pad numbers during the response cycle to either remain displayed in blue or just flash when the answer is sent and then remain white.
- **Show Cumulative Percent Correct:** Displays the cumulative percent of correct answers for the session in the Feedback Grid after the response cycle ends.
- **Show Answer Distribution:** Displays the number of students who responded to each answer choice for a question after the response cycle ends.
- **Detached Narrative:** Creates a button on the Feedback Grid for questions with narratives imported from ExamView so the user can choose whether or not to show the associated Narrative with the question in the Content Delivery window.
- **Auto Show Detached Feedback Grid:** Detaches the Feedback Grid from the Content Delivery window during a response cycle.
- **Show Large Screen:** Displays questions in the Content Delivery window. The Content Delivery window contains the questions and answer choices for each question.
- **Show Percent Correct:** Displays the percentage of students who correctly answered the question after the response cycle ends.
- **Show Correct Answer:** Displays the correct answer to the question as a green checkmark in the Content Delivery window after the response cycle ends.
- **Auto Start the Timer:** Automatically begins the question timer when you start the response cycle.
- **Auto Start the Question:** Automatically starts the question, so that you do not need to press the Start button to begin the response cycle.
- **Auto Show Charting:** Automatically displays the Charting window after the response cycle ends.
- **Timer Length:** Changes the default length of time displayed in the Content Delivery window during a response cycle.
- **Timer Increment:** Changes the default increment of time change when using the + and - sign displayed in the Content Delivery window during a response cycle.

Verbal Questions

- **Show Large Screen:** Displays the Content Delivery window when you engage a verbal question to type in a question and answers so they are recorded.
- **Auto Show Charting:** Automatically displays the Charting window after the response cycle ends.

Time Based

- **Auto Move to Next Question:** Automatically advances to the next question after the response cycle ends.
- **Timer Length:** Changes the length of time a question is displayed in the Content Delivery window during a response cycle before automatically moving to the next question.
- **Timer Increment:** Changes the increment of time change when using the + and - sign displayed in the Content Delivery window during an automatic advance response cycle.